



MDF-DU702VH-PA

VIP® ECO

ENERGY STAR® Certified
Natural Refrigerant -86°C Freezer

MDF-DU702VH-PA, 220V
MDF-DU702VHA-PA, 115V

25.7 cu.ft. | 729 L



Ideal for new or replacement installations requiring a 115V or 220V connection, the VIP ECO 25.7 cu.ft. (729 L) upright ultra-low temperature freezer delivers the lowest daily energy usage.¹⁾ Performance, reliability and energy efficiency combine to secure your most valuable biological samples.

Performance and Reliability

The robust refrigeration system provides dependable cooling and temperature performance through specialty engineered heat transfer components and time-tested natural refrigerants. Reserve refrigeration power assures exceptionally fast temperature recovery following door openings. Performance and reliability are never compromised when it comes to storing your valued products.

Energy Efficient,¹⁾ Balanced Power

Smart compressors, natural refrigerants and integrated electronics combine to lower your facility's operating costs.

- 0.29 kWh/cu.ft. Daily Energy Consumption
- 8.20 kWh/day, Steady State at -80°C
- 5.91 kWh/day, Steady State at -70°C

Temperature Uniformity

- ±2.01°C at -80°C
- ±1.86°C at -70°C

Security Control and Monitoring

An eye level, door mounted color LCD touchscreen allows full user control while the USB port makes transferring logged data to a PC convenient. All performance attributes are displayed and an internal temperature log is expressed in graphic form over time.



Natural Refrigerants

Natural refrigerants minimize environmental impact without jeopardizing ultra-low temperature freezer performance.



EZlatch

EZlatch is the centerpiece of a holistic access and frost mitigation system. Simplified one-handed operation maintains the integrity of the door seal to assure energy efficiency.



Ease of Use

A full function display panel includes audible and visual warnings, unit diagnostics, temperature and door opening history.

¹⁾ Based on independent third-party testing at time of publication. ENERGY STAR test results for submitted products can be compared for performance across the competitive market. For results see the ENERGY STAR website www.energystar.gov/productfinder/product/certified-lab-grade-refrigeration/details/2303094. See Certification Number 4788723268.



VIP^{ECO} -86°C ULT Upright Freezer

MDF-DU702VH-PA, 220V MDF-DU702VHA-PA, 115V



The outer door gasket is easily removed and replaced without tools while the freezer remains in operation.

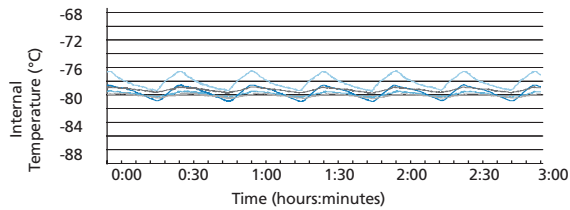
Model MDF-DU702VH-PA shown with one additional shelf to create five levels. Three shelves supplied standard. Additional shelves available.

Efficient Sample Storage

The upright cabinet design employs patented VIP Plus insulated panels that offer space efficiency. This allows the freezer cabinet to maximize storage space, holding up to 576, 2" boxes within a 9.78 sq.ft. (0.91 m²) footprint.

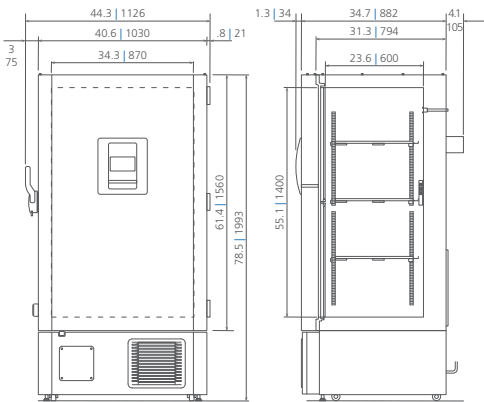
Temperature Uniformity Data:

-80°C setpoint at 23°C ambient temperature, empty freezer



Dimensions

Unit : inch | mm



Model Number	MDF-DU702VH-PA	MDF-DU702VHA-PA
External Dimensions (W x D x H) ¹⁾	inches mm	40.6 x 36.8 x 78.5 1030 x 935 x 1993
Internal Dimensions (W x D x H)	inches mm	34.3 x 23.6 x 55.1 870 x 600 x 1400
Volume	cu.ft. liters	25.7 729
Net Weight	lbs kg	613 278
Capacity (2" boxes)	qty	576
Capacity (3" boxes)	qty	384
Inventory Racks (2" boxes)	qty	24
Inventory Racks (3" boxes)	qty	24
Performance		
Warranty ²⁾		5 years parts and labor
Cooling Performance ³⁾	°C	-40 to -86 -50 to -86
Temperature Setting Range ³⁾	°C	-40 to -90 in 1° increments -50 to -90 in 1° increments
Temperature Control Range ³⁾	°C	-40 to -86 in 1° increments -50 to -86 in 1° increments
Control		
Controller		Microprocessor, touchscreen data entry, password protected
Display		LCD color touchscreen
Temperature Sensor		Pt-1000
Refrigeration		
Refrigeration System		Synchronized variable speed cascade system
Compressors	W	(2) 750, variable speed
Refrigerant		High-stage R-290 natural refrigerant Low-stage R-170 natural refrigerant
Insulation Thickness, Material	inches mm	3.1 80, rigid polyurethane foam (PUF) + VIP Plus vacuum insulated panels
Construction		
Exterior Material		Painted electrogalvanized steel
Interior Material		Powder coated electrogalvanized steel
Outer Door	qty	1 (key lock with provision for optional pad lock)
Inner Doors	qty	2 (insulated, ABS, stainless steel frames, positive latches)
Shelves	qty	3 (adjustable)
Shelf Dimensions (W x D)	inches mm	33.6 x 21.0 855 x 534
Max. Load per Shelf	lbs kg	110 50
Auto Vacuum Relief	qty	1: in door
Manual Vacuum Relief	qty	1: lower left side
Access Ports	qty	3: upper back wall (back-up system), bottom left (recorder sensor), bottom right (access)
Access Port Diameter	inches mm	0.6 17
Casters	qty	4 (2 leveling feet on front base)
Alarms (V = Visual Alarm, B = Buzzer Alarm, R = Remote Alarm)		
Power Failure		V-B-R
Temperature (High and Low)		V-B-R
Sensor Failure		V-B-R
Door Open		V-B
Battery Check		V
Remote Alarm Contacts		DC 30V 2A (normally open, normally closed, common)
Electrical and Noise Level		
Power Supply		220V, 1Ø, NEMA 6-15P, requires NEMA 6-15R receptacle 115V, 1Ø, NEMA 5-20P, requires NEMA 5-20R receptacle
Noise Level ⁴⁾	dB(A)	46
Options		
Inner Door Kit with 5 Smaller Doors ⁵⁾		MDF-7ID5-PW
Inner Door Kit with 4 Smaller Doors ⁵⁾		MDF-7ID4-PW
Liquid CO ₂ Back-Up System		MDF-UB7-PW
Temperature Recorder		
Circular Type	6", 7 day circular	MTRC954
Chart Paper	52 charts per box	C7100386REV
Ink Pen	pack of 6	R252
Optional Communication System		
Wireless, Cloud-Based, Automatic Data Management		LabAlert® Monitoring System

¹⁾ Exterior dimensions of cabinet excluding handle, rear stand-off brackets and other external projections. Consult product web page for doorway entry instructions, less than 36.8": www.phchd.com/us/biomedical/preservation/ultra-low-freezers/mdf-du702vhpa

²⁾ Current warranty offered at time of printing and may be subject to change; US and Canada only

³⁾ Air temperature measured at freezer center, ambient temperature +30°C, no load

⁴⁾ Nominal value, background noise 20 dB(A)

⁵⁾ Installation of small inner door kit may affect usable storage capacity



PHC Corporation of North America
1300 Michael Drive, Suite A, Wood Dale, IL 60191
Toll Free USA (800) 858-8442, Fax (630) 238-0074
www.phchd.com/us/biomedical

Specifications are subject to change without notice.

For latest specification information contact PHC Corporation of North America at info@us.phchd.com. Performance data herein is based on independent testing at time of publication.

